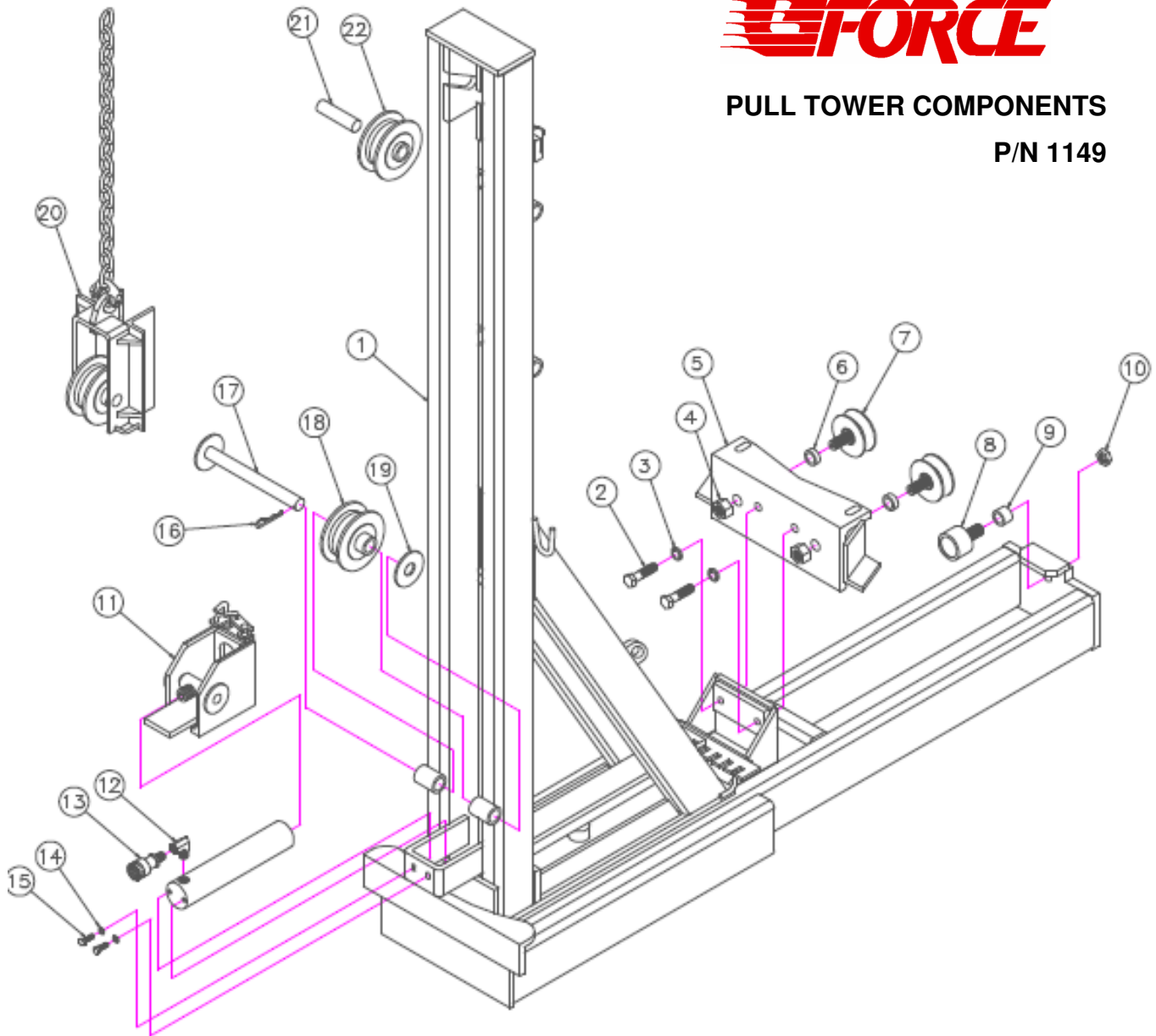




PULL TOWER COMPONENTS

P/N 1149



Ref #	Qty	P/N	Description
1	1	1149	G-Force Tower w/Ram
2	2	4118	5/8" - 11 x 2-1/2" Screw, HC
3	2	4136	5/8" YZ Lock Washer
4	2	4142	7/8"-14 Nylock Jam Nut
5	1	4223	Roller Bracket for Tower Platform
6	1	4140-5/8	5/8" I.D. Spacer
7	2	4225	3-1/2" V-Groove Roller
8	1	4261	2-1/4" Plain Stud Roller
9	1	4140-7/8	7/8" I.D. Spacer
10	1	4266	7/8"-14 Nylock Jam Nut
11	1	114903	Slide Box w/Auto Chain Lock

Ref #	Qty	P/N	Description
12	1	1330	Hydraulic Fitting 3/8", M/F 90°
13	1	1315	Coupler, Female, Air/Hyd. Tower
14	2	4174	5/16" Lock Washer, Zinc
15	2	4173	5/16"-18 x 1" HHCS
16	1	4150	Pin, #11 Hairpin Cotter
17	1	4201A	Fixed Roller Pin
18	1	4217-3.75	3-3/4" x 5" Roller
19	1	4007	1" Flat Washer, YZ
20	1	114801	Roller Box w/Chain
21	1	4236	1 x 3-7/8" Straight Pin
22	1	4217-2.75	2-3/4" x 5" Roller